

Kundenservice mit Künstlicher Intelligenz und Chatbots revolutionieren



Johannes Hehr

Was verbindet diese Brands?

flatEX

DER SPIEGEL

BLACKROLL®

Spektrum
der Wissenschaft

BLUME
2000

CHOCO
VERSUM

Immo
Scout24



broker



VELUX®

Frankfurter Allgemeine

{moin}ai

**Jeder hat heute schon
mehr als 10 Nachrichten
erhalten oder gesendet.**

A man with dark hair and a beard, wearing a blue long-sleeved shirt and blue jeans, is sitting on a red armchair. He is looking down at a tablet computer he is holding in his hands. The room is filled with numerous papers and documents that appear to be falling or floating in the air, creating a sense of information overload. The background is a bright, slightly blurred doorway or window, suggesting an indoor setting. The overall lighting is soft and focused on the man and the papers.

{moin}ai

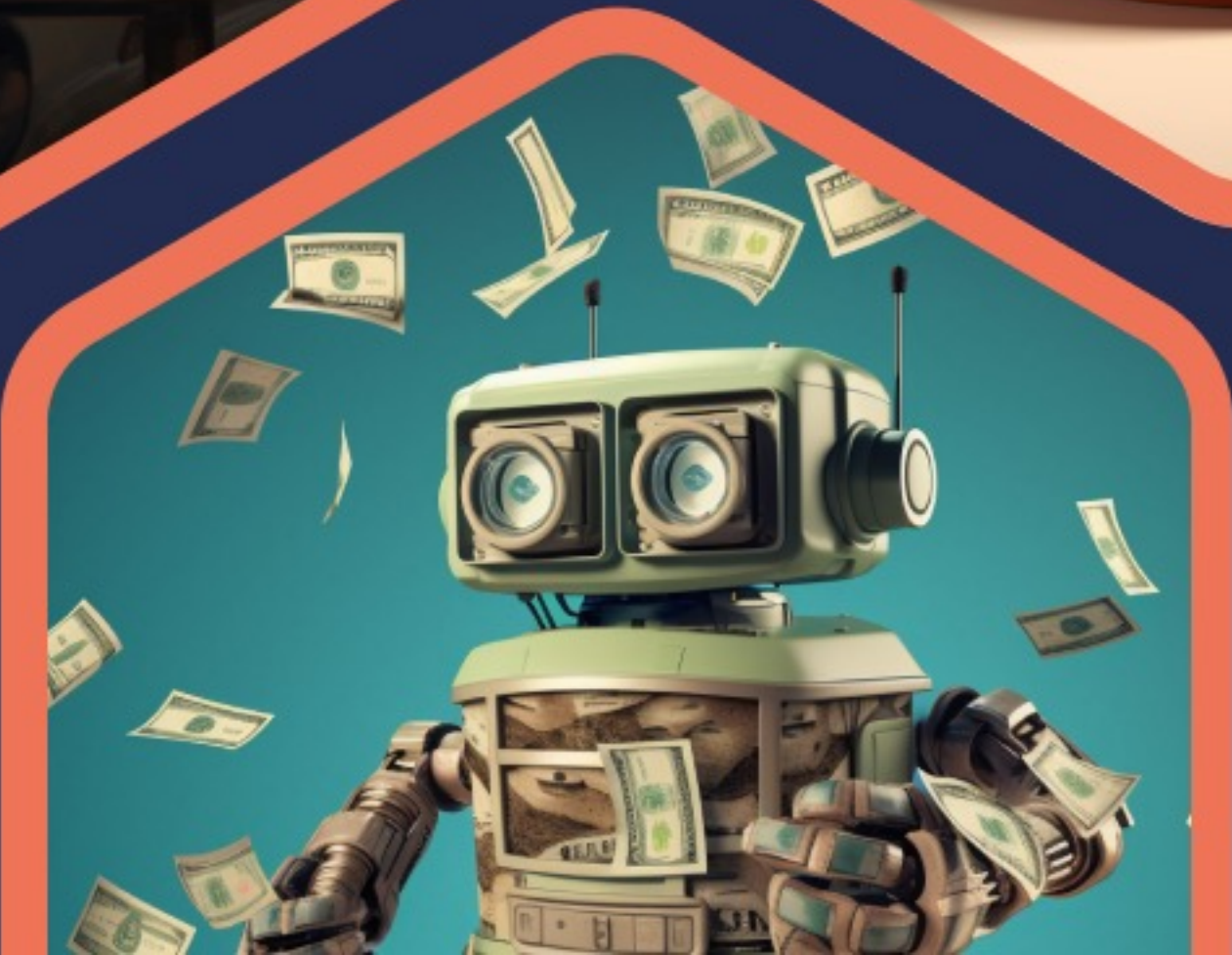
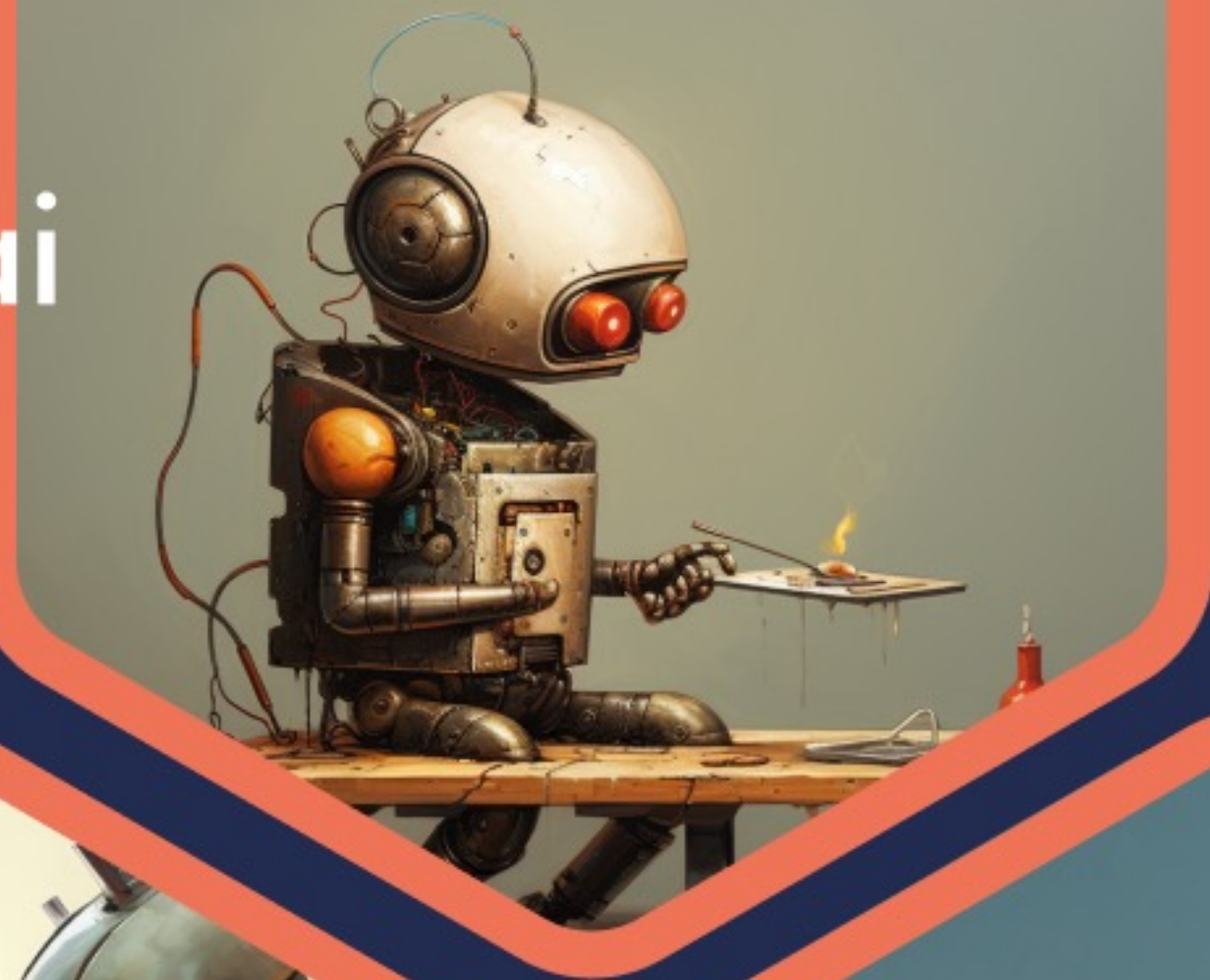
**Zeit ist
kostbar**

**Asynchrone
Kommunikation**

Nutzerverhalten



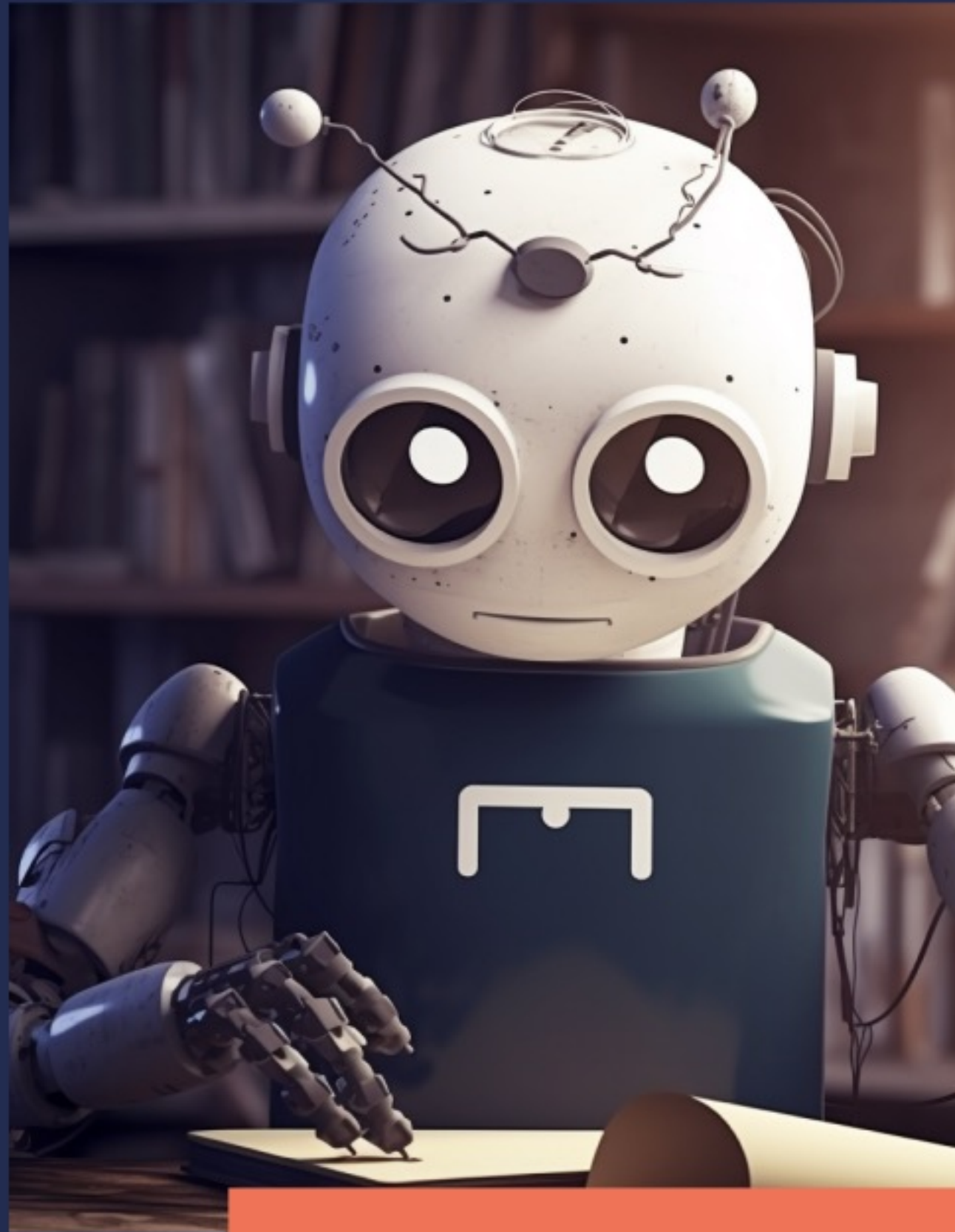
{moin}ai



It's **not** that easy.

- Missverständliches Prompt-Engineering
- Generative AI hat Interpretations-Freiraum (führt u.a. zu falschen Informationen)
- Invest in Produkte wie ChatGPT kostet Geld und Ressourcen

Roleplay AI



Sprachverständnis

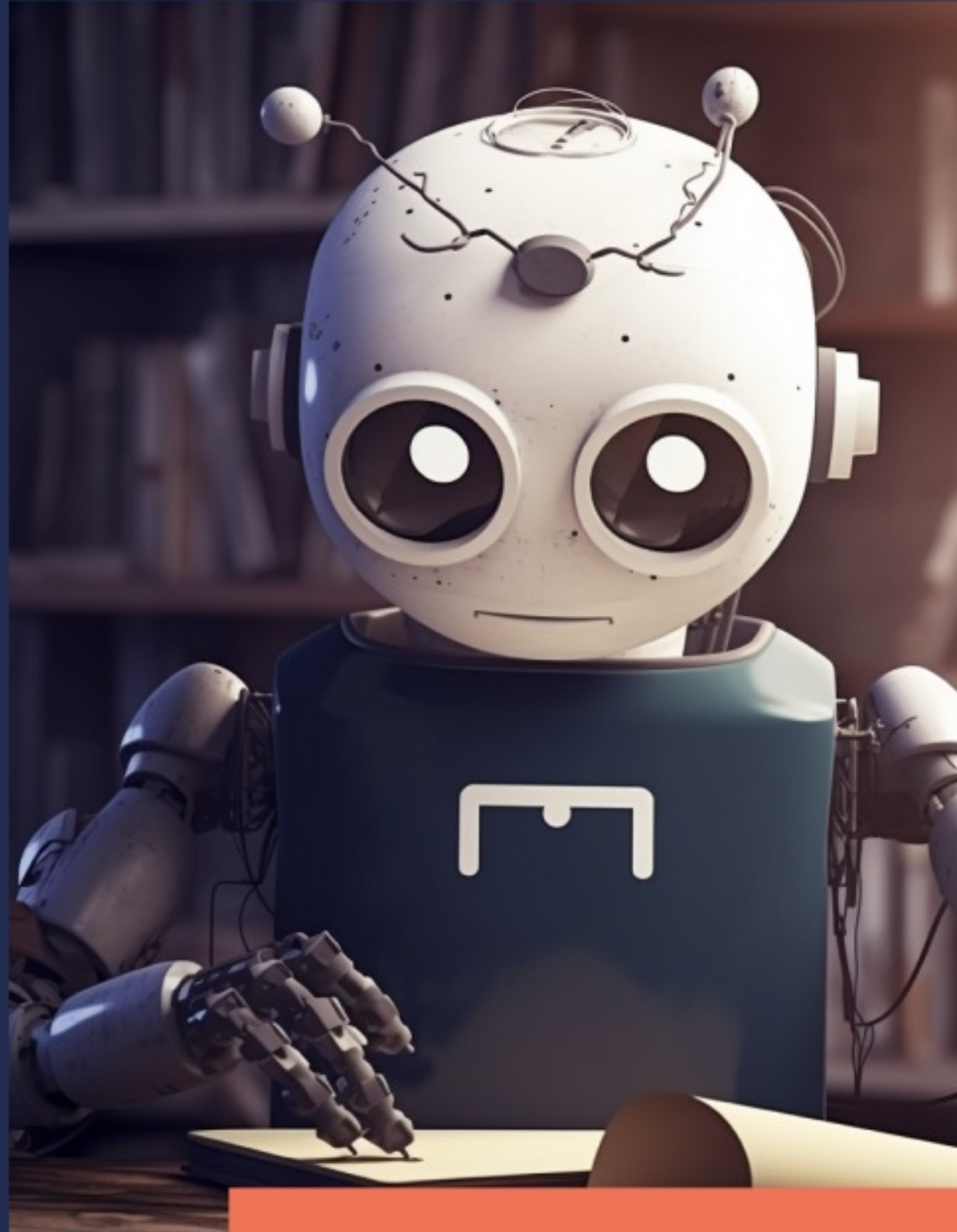


Content Management



Output

Roleplay AI



Sprachverständnis

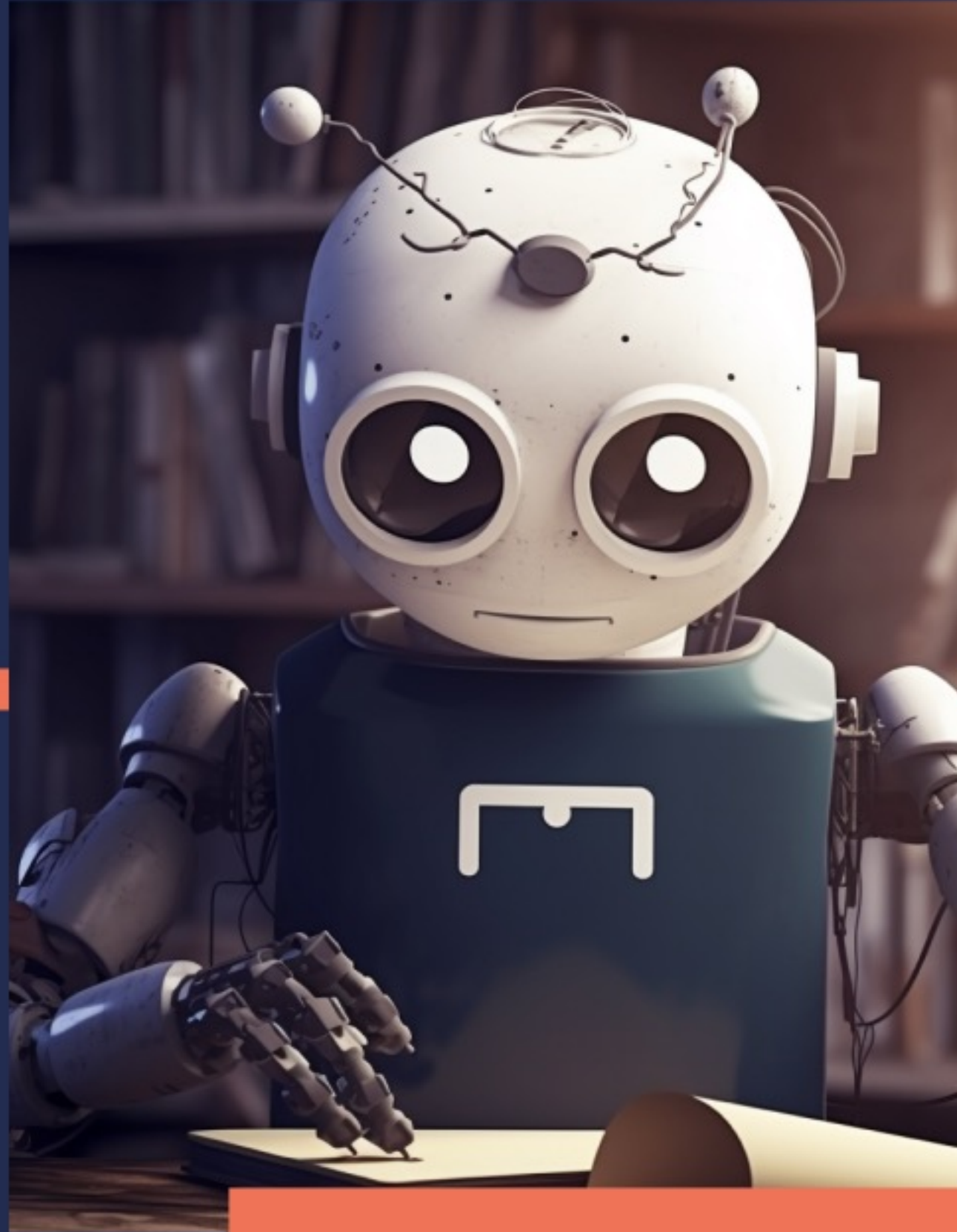


Content Management



Output

Roleplay AI



Sprachverständnis



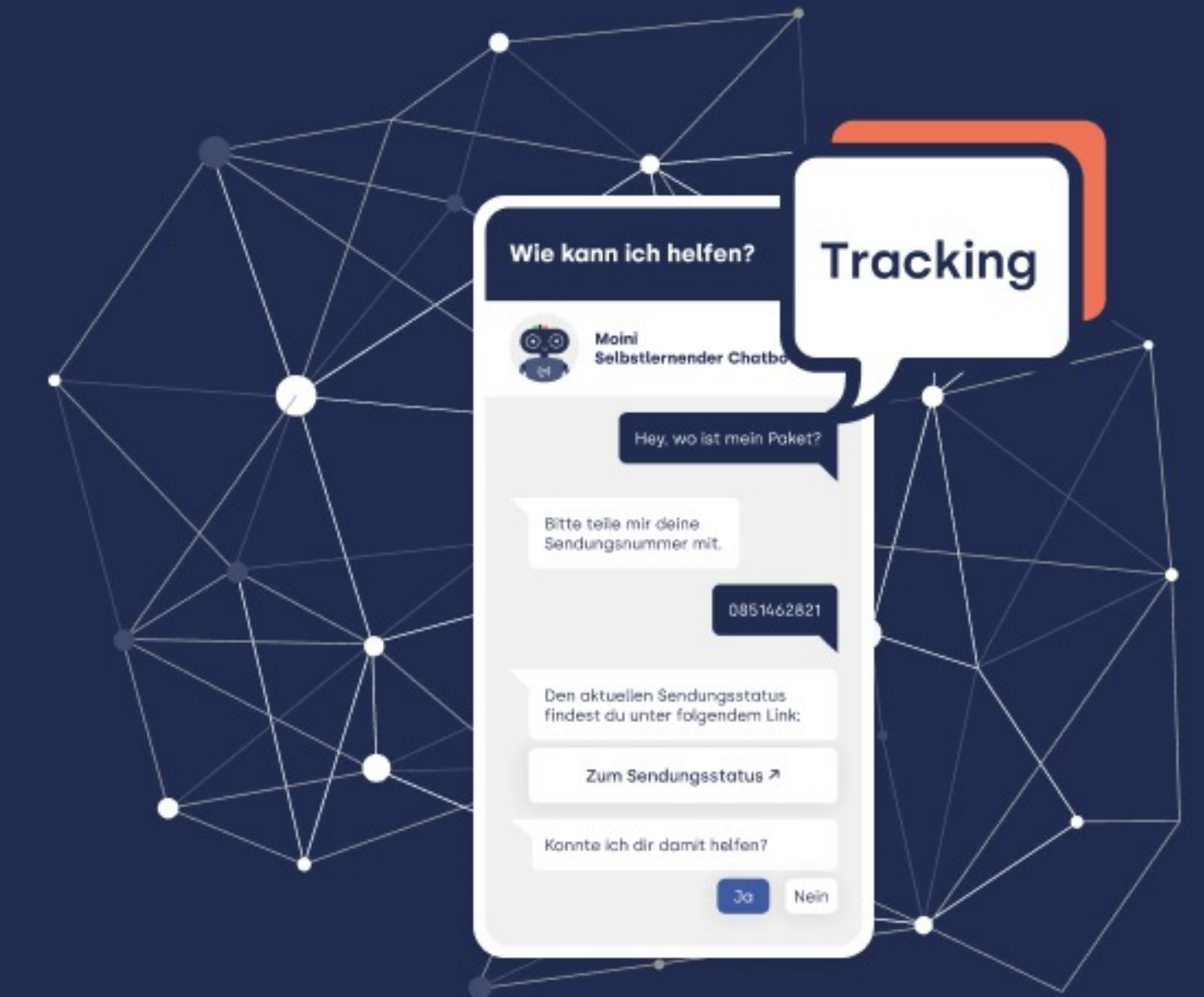
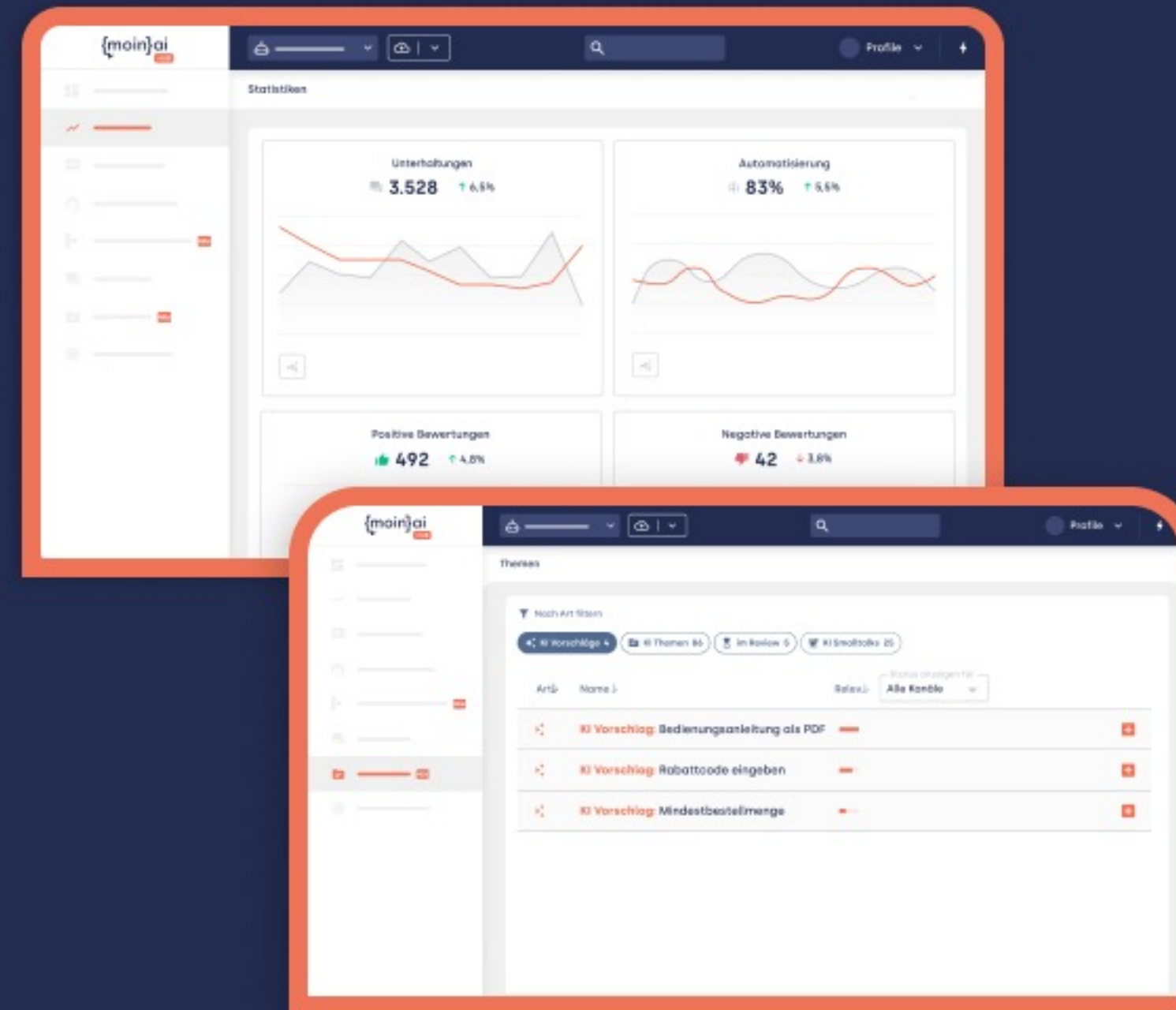
Content Management



Output



Kombination & Integration



Sprachverständnis

Integration

Output

**Besucht uns gerne online oder
hier auf dem Service Summit**



www.moin.ai

Johannes Hehr

**Die andere Seite dieser Wand. Einfach rumkommen.*